

# ViewCommander

## IP Camera Surveillance Software

Internet Video & Imaging, Inc.

**ViewCommander Video Surveillance Software** expands the capabilities of your IP network camera deployment by providing essential features and services required for effective video surveillance. Security professionals are choosing ViewCommander because of its unique combination of features, performance, reliability, scalability, and ease of use.

### ViewCommander-NVR



**ViewCommander-NVR** (Network Video Recorder) is the heart of an IP camera network. ViewCommander-NVR connects to all of your IP cameras simultaneously, allowing you to view, control, and record your cameras' video from a single interface.

Integrated digital video enhancement features extend the capabilities of your cameras. Advanced motion detection allows video to be recorded only when needed – saving valuable disk space.

ViewCommander-NVR's integrated video server allows multiple remote users to securely access all of your cameras through one IP address, simplifying access for users, as well as easily controlling what users can do.

### ViewCommander-Mobile

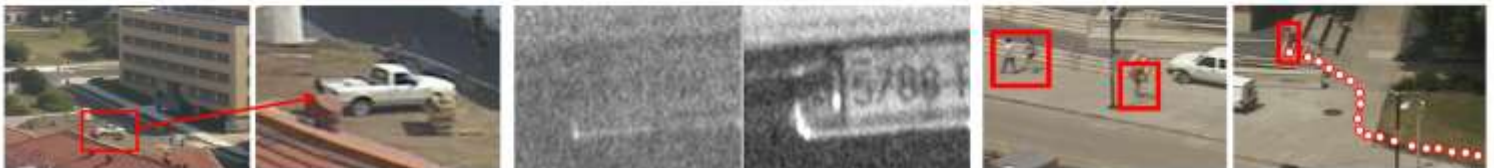


**ViewCommander-Mobile** is the first application that allows you to view and control live IP Network cameras on Pocket PCs and Smartphones. ViewCommander-Mobile is the leader in mobile remote video access.

ViewCommander-Mobile lets you view and control your IP cameras from anywhere you have a wireless connection. You can connect directly to your cameras, or you can connect to your cameras through ViewCommander-NVR.

Advanced features allow you to control Pan-Tilt-Zoom (PTZ) functions, save snapshots, digitally zoom in on objects, enhance the video, and sound an audio alert when motion is detected.

### ViewCommander digital video enhancement features



#### Digital Zoom

Zoom in digitally when your camera can't

#### Night Enhancement

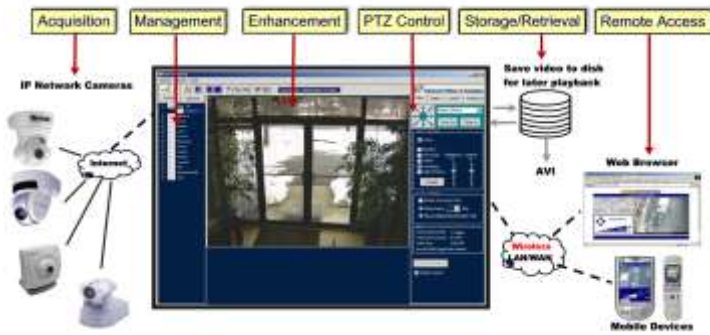
See detail impossible to see before

#### Object Tracking

Highlight moving objects and track their paths

Actual images. Results may vary depending on camera model and settings. Not all features available in all versions. Please contact IVI or visit our website for more information.

## ViewCommander-NVR System Overview



**ViewCommander-NVR** gives you the power and tools you need to manage, view, control, and record multiple network-based video camera systems from one easy-to-use interface.

**ViewCommander-NVR** has an integrated digital video recording system allowing you to easily find, review, and export recorded video.

**ViewCommander-NVR** lets you to connect to multiple cameras simultaneously, even if they are from different manufacturers.

**ViewCommander-NVR** has a built-in video server to allow remote access to your live and recorded video - using only a standard web browser with no plug-ins.

## ViewCommander-NVR partial feature list

- View and record video up to 30 FPS per camera
- Audio recording for supported cameras
- Pan Tilt Zoom (PTZ) control support
- Record and play back video simultaneously
- Synchronized playback
- Integrated digital image enhancement
- 24 hour – 7 day scheduling
- Digital fingerprint verification for recorded video
- User level security with "per camera" user access
- Event email alerts
- Automatic object tracking using PTZ functions
- Preset patrolling & touring, return to preset on timeout
- Snapshots - save individual snapshots to disk
- Digital zoom
- Record on motion detection
- Motion detection audio & visual alert notification
- Advanced motion detection settings and thresholds
- Motion detection allows multiple "regions of interest" with grid overlay
- Email alert notification with JPEG attachment on motion events
- Digital I/O alarm notification for supported cameras
- Pre and post alarm event recording
- Export video to AVI format for sharing
- Export digitally enhanced recorded images
- Integrated web and video server
- Remote web access for live video and PTZ functions
- Remote web access for recorded video
- Pocket PC and Smartphone access
- **And more ...**

### Supported IP Network Cameras

Partial Listing	
AXIS	ViewCommander supports most MJPEG and JPEG cameras. Some MPEG-4 models are also supported.
Sony	
Panasonic	
Canon	
Toshiba	
Samsung	
Intellinet	If your model camera is not on our list, please contact us. We usually add support for additional camera models at no additional charge.
D-Link	
TRENDnet	
Others supported. See website	

### NVR Recommended System Requirements

Processor	Pentium IV 2.0 GHz or higher
System memory	512MB
Memory per camera	16MB suggested
Video card	Almost any video card
Operating system	Windows® XP, Vista, Server 2003 & 2008, Win7
Network card	Ethernet, 802.11, and other wireless networks
Disk size	Based on recording requirements
Mobile System Requirements	
Hardware device	Pocket PC or Smartphone
Operating system	Windows Mobile 6.1, 6, 5, 2003, 2003SE
Network	WiFi, EVDO, GPRS, EDGE, any Internet connection

**Experience ViewCommander for yourself.  
Call for a free software evaluation.  
(800) 635-1127 - sales@ivimg.com**



**ViewCommander is engineered, built and supported in the USA**

Copyright © 2009 Internet Video & Imaging, Inc. All rights reserved.

This document is for informational purposes only, and contents are subject to change without notice. Some features shown are not available in all product versions. All other company names and products are registered trademarks of their respective companies.

Printed in the USA